



FORCED AIR

KEROSENE / DIESEL HEATERS

USER'S MANUAL & OPERATING INSTRUCTIONS RPK1300F



DANGER

READ AND UNDERSTAND ALL OF THE INSTRUCTIONS IN THIS MANUAL BEFORE ASSEMBLING, STARTING, OR SERVICING THE HEATER. Be sure to comply with the instructions and warnings provided with this heater. Failure to comply can result in fire or explosion that can cause property loss, bodily injury, or loss of life. Only persons who can follow and understand these instructions should operate or service this heater. If you need heater info; such as an operating manual, labels, etc. Please visit our website www.remingtonpower.co.nz

NOT FOR USE IN RESIDENTIAL LIVING AREAS OR IN ENCLOSED SPACES WITHOUT ADEQUATE VENTILATION. FOR OUTDOOR USE. INDOOR USE PERMITTED ONLY FOR: The temporary heating of adequately ventilated buildings or structures under construction, alteration or repair. This is an unvented portable heater that uses air (Oxygen) from within the area in which it is used. Failure to provide adequate combustion and ventilation air will result in asphyxiation, carbon monoxide poisoning, bodily injury or death. Refer to "Ventilation" on Page 7.

www.remingtonpower.co.nz

CONTENTS

Introduction.....	3
Environmental Protection.....	3
Safety Information.....	3
Specifications.....	5
Equipment Identification.....	5
Operation.....	6
Assembly.....	8
Circuit / Wiring Diagram.....	11
Maintenance.....	12
Parts Diagram.....	13
Parts List.....	14
Warranty.....	15

INTRODUCTION

Your new Remington Heater will more than satisfy your expectations. It has been manufactured under stringent quality standards to meet superior performance criteria. You will find your new tool easy and safe to operate, and, with proper care, it will give you many years of dependable service.



CAUTION: Carefully read through this entire Instruction Manual before operating your new Remington Heater. Take special care to heed the Cautions and Warnings.

ENVIRONMENTAL PROTECTION

Recycle unwanted materials instead of disposing of them as waste. All tools, hoses and packaging should be sorted, taken to the local recycling centre and disposed of in an environmentally safe way.



SAFETY INFORMATION



WARNING: Fire, burn, inhalation and explosion hazard.

Keep combustibles such as building materials, paper or cardboard a safe distance away from the heater as recommended by these instructions. Never use the heater in spaces which contain products such as; gasoline, solvents, paint thinners, dust particles, volatile or airborne combustibles or any unknown chemicals. This is an unvented portable heater. It uses air (Oxygen) from the area in which it is used. Adequate combustion and ventilation

air must be provided. Refer to "Ventilation" on page 9. Bulk fuel storage should be a minimum of 8 metres from heater.



WARNING: Do not operate this heater until you have read and thoroughly understand these safety and operating instructions.

Failure to comply with the precautions and instructions provided with this heater can result in death, serious bodily injury, property loss or damage from the hazards of fire, soot production, explosions, burns, asphyxiation or carbon monoxide poisoning. Only persons who can read and understand these instructions should use or service this heater.



WARNING: Do not start the heater when excess fuel has accumulated.



WARNING: Do not start the heater when the chamber is hot.



Look for this icon throughout the manual for helpful tips on how to assemble, use and clean your Silent Drive Heater.



WARNING: Risk of indoor air pollution!

The products described in this manual are Kerosene/Diesel direct-fired, forced air heaters. Kerosene/Diesel forced air heaters are primarily intended for use for temporary heating of buildings under construction, alteration or repair. Direct-fired means that all of the combustion products of the heater enter the heated space. This appliance is rated at 98% combustion efficiency, but does produce small amounts of carbon monoxide.



WARNING: *Carbon monoxide poisoning may lead to death!*

Carbon monoxide is toxic. Humans can tolerate only small amounts of carbon monoxide and so precautions should be taken to provide proper ventilation. Failure to provide proper ventilation in accordance with the instructions in this manual can result in death. People with breathing problems should consult a physician before using this heater.

Early signs of carbon monoxide poisoning resemble the flu. Symptoms of improper ventilation / carbon monoxide poisoning are: Headache • Dizziness • Nausea • Dry Mouth Sore Throat • Burning of Nose and Eyes

If you experience any of these symptoms: **GET FRESH AIR AT ONCE!** Have your heater serviced and check for proper ventilation. Some people are more affected by carbon monoxide than others. These include: pregnant women, those with heart or lung problems, anemia or those under the influence of alcohol or at high altitudes.

FOR OUTDOOR USE. INDOOR USE PERMITTED ONLY FOR: The temporary heating of adequately ventilated buildings or structures under construction, alteration or repair! Provide at least a three square foot (2,800 sq cm) opening of outside air for every 100,000 Btu / Hr heater rating. Refer to "Ventilation" on page 7 for further instructions.



WARNING: *Risk of electric shock!*

ALWAYS use only the electrical power (voltage and frequency) specified on the model plate of the heater.

ALWAYS use only three-prong, grounded outlet and extension cord.

ALWAYS unplug the heater when not in use.

ALWAYS install the heater so that it is not directly exposed to water spray, rain, dripping water, or wind.



WARNING: *Risk of burns, fire and explosion!*

NEVER use fuels such as gasoline, benzene, paint thinners or other oil compounds in this heater.

NEVER refill the heater's fuel tank while the heater is operating or still hot. This heater is **EXTREMELY HOT** while in operation.

NEVER block air outlet (front).

NEVER use duct work in front of heater.

NEVER move or handle heater while still hot.

NEVER transport heater with fuel in tank.

NEVER use with an external fuel tank.



CAUTION: *Hot while in operation. Do not touch. Keep children, animals, clothing and combustibles away from heater.*

Minimum Clearance From Combustibles

	RPK1300F
Top:	1.2m
Sides:	1.2m
Front:	2.4m

ALWAYS locate heater on a stable and level surface.

If your heater is equipped with a thermostat, once it is plugged in, it can start at anytime in accordance with the thermostat setting.

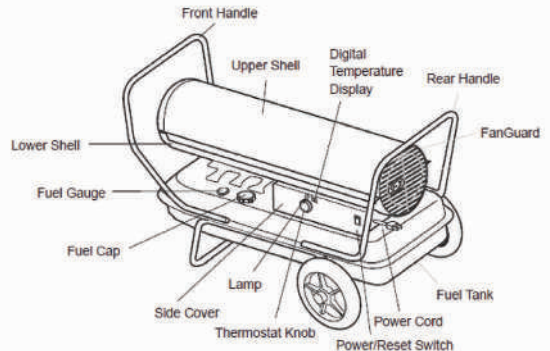
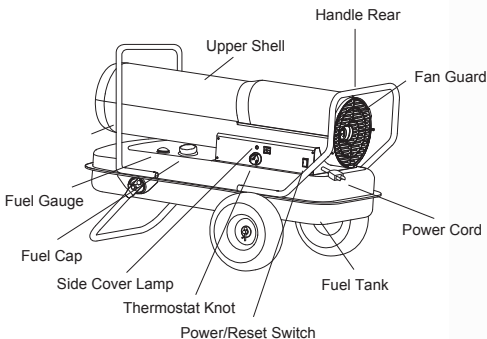
INTRODUCTION

- The REMINGTON RPK1300F Industrial Fan Forced Heater generates 130,000 (38KW) of infrared heat, making it ideal for heating large, well-ventilated spaces such as garages and warehouses.
- Suitable for use with diesel and kerosene.
- Features a durable 40L steel fuel tank with an economical average fuel consumption of 3.6 liters per hour.
- Includes an LED thermostatic control with automatic cut-off, ensuring cost savings through reduced energy and fuel consumption.
- Equipped with a timed ventilation system to efficiently cool the combustion chamber.
- Designed with a tough, powder-coated housing for enhanced protection against the elements and challenging work environments.

SPECIFICATIONS

Voltage ~ Frequency:	230V ~ 50Hz
Power:	200W
Power Cable / Plug:	10A SAA Plug
Heat Output:	130,000 BTU/Hr (38kW)
Average Heating Area:	300m ² /h
Fuel Consumption:	3.6L/Hr
Fuel Type:	Diesel / Kerosene
Fuel Tank Capacity:	40L
Maximum Run Time:	11hrs
Assembled Dimensions (LXWXH):	980mm x 545 x 670mm
Weight:	24.4kg

EQUIPMENT IDENTIFICATION



OPERATION

FUEL GUIDELINES

- For optimal performance, only use Diesel Fuel or 1-K kerosene in this heater. 1-K kerosene is refined to virtually eliminate contaminants such as sulfur, which can cause unpleasant odors, like a rotten egg smell, during operation.
- Be aware that alternative fuels do not burn as cleanly as 1-K kerosene. If alternative fuels are used, ensure adequate fresh air ventilation to offset any additional contaminants introduced into the heated space.

Note: Kerosene should be stored only in a blue container marked “kerosene.” Never store kerosene in a red container, as red signifies gasoline.

- NEVER store kerosene inside a living space. Store it in a well-ventilated area outside the living area.
- NEVER use volatile fuels such as gasoline, benzene, alcohol, white gas, camp stove fuel, paint thinners, or other oil compounds in this heater. These fuels are highly flammable and could cause a fire or explosion.
- NEVER store kerosene in direct sunlight or near heat sources.
- NEVER use kerosene that has been stored from one season to the next, as kerosene deteriorates over time. Old kerosene will not burn properly in this heater.

OVERVIEW OF HEATER DESIGN

Fuel System:

- This heater is equipped with an electric air pump that forces air through an air line connected to the fuel intake, and then through a nozzle in the burner head. When air flows in front of the fuel intake, it causes fuel to rise from the tank and spray into the burner nozzle.
- The air and fuel mixture is then atomized into a fine mist and sprayed into the combustion chamber.

SureFire Ignition System:

- An electronic ignitor sends voltage to a specialized spark plug, which ignites the fuel-air mixture in the combustion chamber.

Air System:

- A heavy-duty motor powers a fan that forces air into and around the combustion chamber. The air is heated and released from the front of the heater, creating a steady flow of warm air.

THE SAFETY SYSTEM

Temperature Limit Control:

This heater includes a Temperature Limit Control to automatically turn off the heater if the internal temperature rises to an unsafe level.

If the control activates and shuts off your heater, it may require servicing.

Once the temperature falls below the reset threshold, you can restart the heater.

TOOLS REQUIRED:

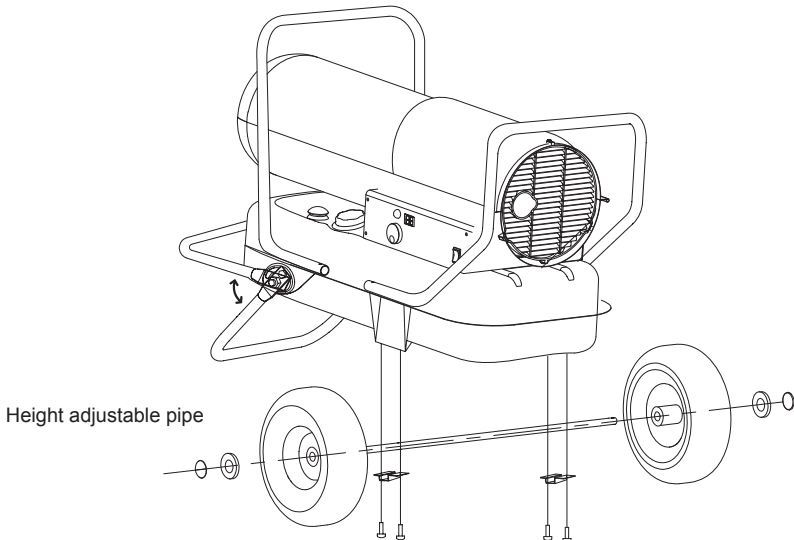
- Medium Phillips screwdriver (2.75 inches).
- M5 open-end or adjustable wrench.
- Long nose pliers.

ASSEMBLY INSTRUCTIONS:

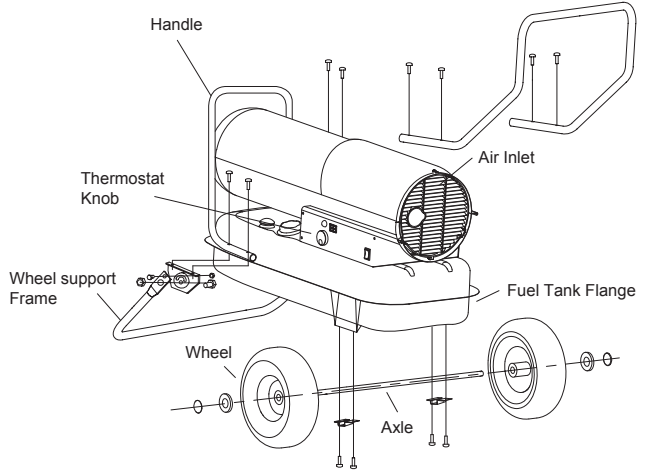
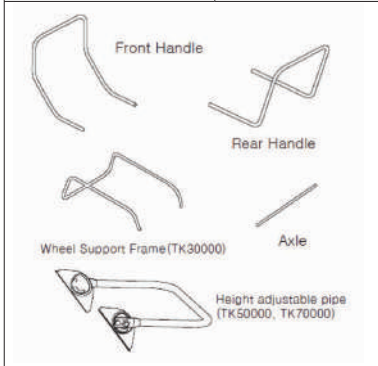
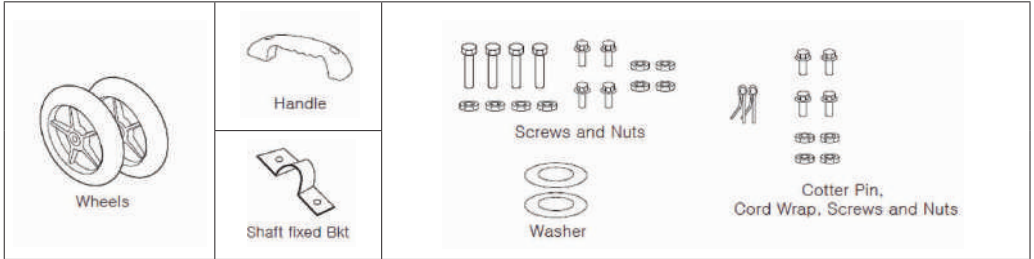
1. Slide the axle through the wheel support frame. Install the wheels on the axle, ensuring the extended hub of the wheel points toward the wheel support frame.
2. Place flat washers and a cotter pin on the axle ends. Use long nose pliers to bend the cotter pin and secure it in place.
3. Position the heater on the wheel support frame, ensuring the air inlet end (rear) of the heater is above the wheels. Align the holes on the fuel tank flange with the holes on the support frame.
4. Place the handle on top of the fuel tank flange. Insert screws through the handle, fuel tank flange, and wheel support frame as shown in Figure 8. Attach nuts finger-tight after inserting each screw.
5. Once all screws are inserted, firmly tighten all nuts.

Important: Do not operate the heater without the support frame fully assembled and securely attached to the fuel tank.

This model comes pre-assembled with handles and an adjustable pipe. Assembly is only required for the wheels with shaft brackets.



ASSEMBLY



Item	RPK1300F
Wheel Support Frame	Yes
Wheels	Yes
Shaft fixed Bracket	Yes
Front Handle	Must be Assembled
Rear Handle	Must be Assembled
Axle	Yes
Handle	No
Screws	No
Screws and Nuts	Yes
Cotter Pin and Washer	Yes

Electrical System Protection:

- The heater's electrical system is safeguarded by a fuse mounted on the PCB Assembly. This protects the electrical components from damage.
- If the heater fails to operate, inspect and replace the fuse as needed.

Flame-Out Sensor:

- A photocell monitors the flame in the combustion chamber during operation.
- If the flame goes out, the sensor automatically shuts off the heater for safety.

FUELING INSTRUCTIONS

- NEVER fill the heater's fuel tank in living spaces; always fill the tank outdoors.
- Avoid overfilling the tank, and ensure the heater is placed on a level surface.
- NEVER refill the fuel tank while the heater is operating or still hot.

OPERATION


Fueling The Heater


Kerosene or Diesel


This heater is multi-fuel rated. Kerosene or diesel may be used, or a mixture of the two.

Fuel Set - Fuel Conditioner

For optimal performance, it is strongly suggested that Fuel Set fuel conditioner be used in addition to fuel. Diesel contaminants such as diesel bug and water in the fuel may make the heater perform poorly. Add the recommended dose of Fuel Set to every tank of fuel when filling to ensure the RPH70R performs at it's peak.

 **DANGER:** *Never refuel this heater while it is hot or operating. Fire or explosion could result.*

 **CAUTION:** *Never fill the fuel tank indoors. Always fill the tank outdoors. Be sure that the heater is on level ground when fueling, and never overfill the tank.*

 **WARNING:** *Do not use gasoline or crankcase drainings.*


NEVER use fuel such as, benzene, alcohol, white glass, camp stove fuel, paint thinners, or other oil compounds in this heater.

THESE ARE VOLATILE FUELS THAT CAN CAUSE A FIRE OR EXPLOSION.

NEVER store Kerosene in the living space. Kerosene should be stored in a well ventilated area outside the living area.

NEVER store Kerosene in direct sunlight or near a source of heat.

NEVER use Kerosene that has been stored from one season to the next. Kerosene deteriorates over time. OLD Kerosene WILL NOT BURN PROPERLY IN THIS HEATER.

 *Kerosene should only be stored in a blue container that is clearly marked "Kerosene." Never store Kerosene in a red container. Red is associated with gasoline.*

Ventilation

There is a risk of indoor air pollution and Carbon monoxide poisoning. Use heater only in well ventilated areas.

Refer to Safety Information on pages 3 - 4 for information about Carbon Monoxide Poisoning.

Always provide a fresh air opening in the heated space of at least 2.8m² (3 sq. ft) for each 100,00 Btu / Hr. of heater output. Provide a larger opening if more heaters are being used.



DANGER: Carbon monoxide poisoning may lead to death!!

Minimum ventilation opening required:

1951cm² - 2.1ft²

Important: First Ignition

When lighting the heater for the first time, do so outdoors. This will allow any oils or residues from manufacturing to burn off safely.

FRESH AIR VENTILATION

Provide a fresh air opening of at least three (3) square feet (2,800 sq. cm) for every 30,000 kcal/Hr. rating.

TO START HEATER

1. Fill the fuel tank with kerosene or diesel
2. Securely attach the fuel cap.
3. Plug the power cord into a three-prong, grounded extension cord (at least six feet long).

Extension Cord Wire Size Requirements:

6 to 10 feet (1.8 to 3 meters): Use 18 AWG conductor.

11 to 100 feet (3.4 to 30.53 meters): Use 16 AWG conductor.

101 to 200 feet (30.8 to 61 meters): Use 14 AWG conductor.

4. Turn the THERMOSTAT CONTROL KNOB to the desired setting and push the power switch to the "ON" position. The power indicator lamp will light, and the heater will start.

If the heater does not start:

Adjust the thermostat to a higher setting. If it still doesn't start, turn the power switch off and then back on.

Refer to the Troubleshooting Chart if necessary.

Note: The heater's major electrical components are protected by a safety fuse mounted on the PCB board.

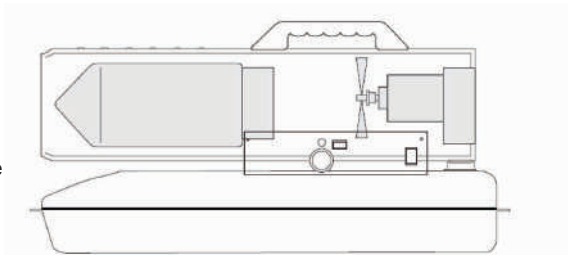
If the heater fails to start, check and replace the fuse as necessary. Ensure the power source is supplying the correct voltage and frequency.

TO SHUT DOWN HEATER

1. Turn the power switch to "OFF."
2. Unplug the power cord.

TO RESTART HEATER

1. Wait 10 seconds after stopping the heater.
2. Follow the steps under "To Start Heater."



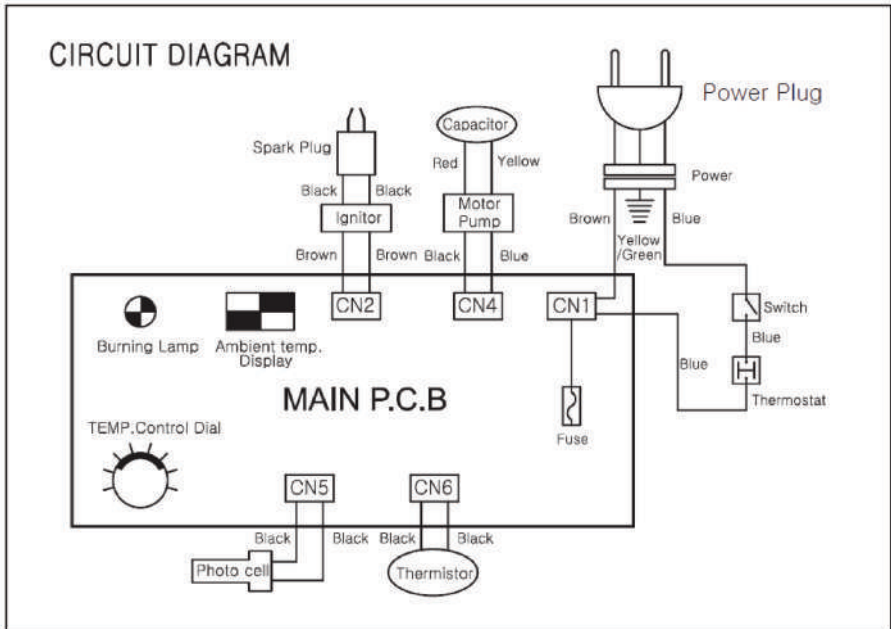
IMPORTANT STORAGE NOTES

- Fully reinstall the plug into the tank hole to ensure a complete seal.
- Store the heater in a location free from dust and corrosive fumes.
- Keep the heater in its original box with the original packing material.
- Always store the USER'S MANUAL with the heater for future reference.



WARNING! Do not turn the mains switch off or disconnect the heater from the mains supply to stop the heater or until the cooling cycle is complete. Turning the mains switch off, or removing the plug from the mains supply to stop the heater or before the cooling cycle is complete may cause overheating, possible damage to the heater and will void the warranty.

CIRCUIT/WIRING DIAGRAM

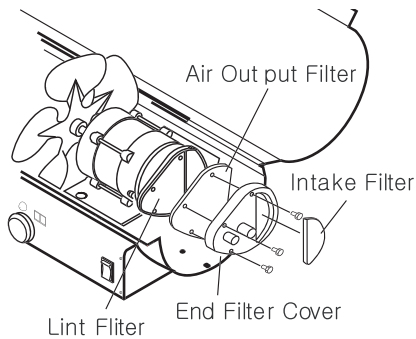


MAINTENANCE

Component:	Frequency:	Procedure:
Fuel Tank	Clean every 150-200 hours of operation or when necessary	Empty and rinse with fresh fuel.
Nozzle	Clean or replace once per season or when necessary	Contact service agent
Photocell	Clean once per season or when necessary	Contact service agent
Fuel Filter	Clean or replace twice per season or when necessary	Clean the fuel filter with clean fuel.
Air Intake Filter	Wash and dry with soap and water every 500hrs of operation or as needed.	Contact service agent
Air Output Filter	Replace every 500hrs of operation.	Contact service agent
Ignition Device	Clean or replace every 1000 hours of operation, or when necessary	Contact service agent
Fan Blades	Clean when necessary	Contact service agent

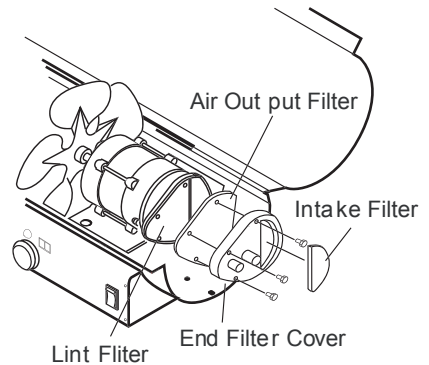
Air Intake Filter

- Remove screws along side of heater using medium Phillips screwdriver.
- Lift off upper shell.
- Remove fan guard.
- Wash or replace air intake filter.
- Reinstall fan guard and upper shell.

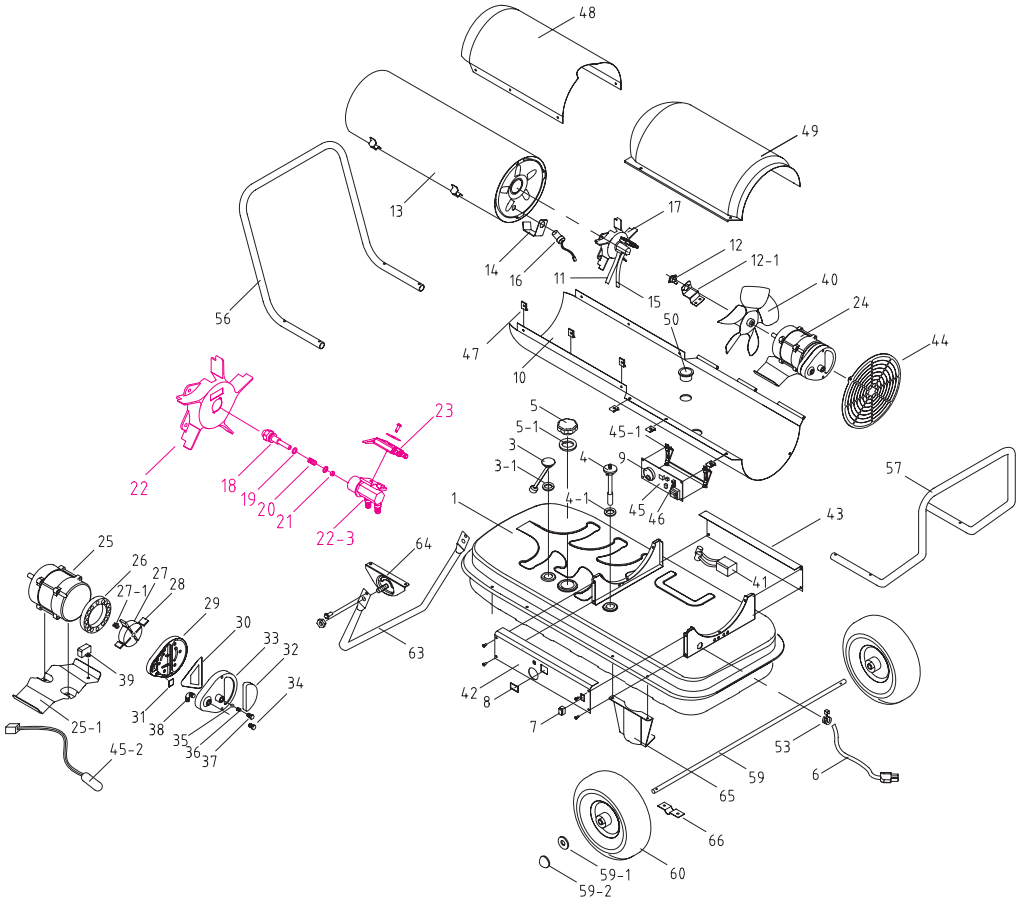


Air Output Filter

- Remove upper shell and fan guard (See Air Intake Filter Figure 15).
- Remove end filter cover screws using medium Phillips screwdriver.
- Remove end filter cover.
- Replace air output and lint filter.
- Reinstall end filter cover.
- Reinstall fan guard and upper shell.



PARTS DIAGRAM



PARTS LIST

#	SKU	DESCRIPTION	#	SKU	DESCRIPTION
1		Fuel Tank Ass'y	36		Spring
2			37		Adjust Screw
3		Fuel Gauge Ass'y	38		Elbow Nipple
3-1		Fuel Gauge Packing	39		Capacitor
4		Fuel Filter Ass'y	40		Fan Ass'y
4-1		Fuel Filter Packing	41		Ignitor
5		Fuel Cap	42		Right Side Cover
5-1		Fuel Cap Packing	43		Left Side Cover
6		Power Cord	44		Fan Guard(Steel)
7		Power Switch			Fan Guard(Plastic)
8		Window Display	45		Main P.C.B Ass'y
9		Thermostat Control Knob	45-1		Main P.C.B Bracket
10		Lower Shell	45-2		Thermistor
11		Air Line	46		Fuse
12		Thermostat Limit Control	47		Clip Nut
12-1		Thermostat Bracket	48		Upper Shell
13		Combustion Chamver	49		Upper cover
14		Photocell Bracket	50		Bushing Grommet(s)
15		Fuel Line	50-1		Bushing Grommet(L)
16		Photocell	51		
17		Burner Head Ass'y	52		Air Pressure Gauge
18		Nozzle	53		Cord Bushing
19		Nozzle seal Washer	54		
20		Nozzle Seal Spring	55		Handle
21		Nozzle Sleeve	56		Front Handle
22		Burner Head	57		Rear Handle
22-1		Nipple(s)	58		Wheel Support Frame
22-2		Nipple(l)	59		Wheel Axle
22-3		Nozzle Rod	59-1		Washer
23		Spark Plug	59-2		Pin
24		Motor and Pump Ass'y	60		Wheel
25		Motor (Round)	61		
		Motor (Square)	62		
25-1		Motor Base(Round)	63		Adjustable Pipe Support
		Motor Base(Square)	64		Pipe Support Bracket
26		Pump Body	65		Wheel Support Bracket
27		Rotor	66		Shaft Fix Bracket
27-1		Insert			
30		Blade			
31		End Pump Cover			
32		Filter Kit(Output Filter)			
33		Lint Filter			
34		Intake Filter			
35		End Filter Cover			

WARRANTY

To validate your warranty, register your product online at www.remingtonpower.co.nz

Whilst every effort is made to ensure your complete satisfaction with this tool, occasionally, due to the mass manufacturing techniques, a tool may not live up to our required level of performance and you may need the assistance of our service department.

This product is warranted for a 12 month period from the date of the original purchase. If found to be defective in materials or workmanship, the tool or the offending faulty component will be replaced free of charge with another of the same item. A small freight charge may apply. Proof of purchase is essential.

We reserve the right to reject any claim where the purchase cannot be verified. This warranty does not include damage or defects to the tool caused by or resulting from abuse, accidents or alterations. It also does not cover any bonus items or included accessories. Only the heater is covered under this warranty.

Please ensure that you store your receipt in a safe place. Conditions apply to the above warranty.

1. **DURATION:** The manufacturer warrants that it will repair or replace, at no charge for parts or labour, the Remington Heater, if proven defective in material or workmanship, during the following time period(s) after date of original retail purchase:

For 1 Year:
This Remington Heater
Model Numbers: RPK1300F

2. **WHO GIVES THIS WARRANTY (Warrantor):**

EUROQUIP NEW ZEALAND
& EUROQUIP AUSTRALIA
www.euroquip.co.nz

3. **WHO RECEIVES THIS WARRANTY (Purchaser):**

The original purchaser of this Remington Heater

4. **WHAT IS COVERED UNDER THIS WARRANTY:**

Defects in material and workmanship which occur within the duration of the warranty period.

5. **WHAT IS NOT COVERED UNDER THIS WARRANTY:**

- A. Implied warranties, including those of merchantability and FITNESS for a particular purpose are limited in duration to this express warranty. After this period, all risks of loss, from

whatever reason, shall be on the purchaser.

- B. ANY INCIDENTAL, INDIRECT, OR CONSEQUENTIAL LOSS, DAMAGE, OR EXPENSE THAT MAY RESULT FROM ANY DEFECT, FAILURE OR MALFUNCTION OF THIS PRODUCT.
- C. This warranty does not apply to any accessory or consumable items included with the product which are subject to wear from usage; the repair or replacement of these items shall be at the expense of the owner. These items include, but are not limited to: sparkplugs, seals, o-rings, nozzles, tuning costs, wheels, tyres, bearings, parts, etc. In addition, this warranty does not extend to any damage caused by the untimely replacement or maintenance of any of the previously listed CONSUMABLE parts.
- D. Any failure that results from accident, purchaser's abuse, neglect or failure to operate products in accordance with instructions provided in the owner's manual(s) supplied with the product.
- E. Pre-delivery service, i.e. assembly and adjustment.

6. **RESPONSIBILITIES OF WARRANTOR UNDER THIS WARRANTY:** Repair or replace, at Warrantor's option, products or components which have failed within duration of the warranty period.

7. **RESPONSIBILITIES OF PURCHASER UNDER THIS WARRANTY:**

- A. Please call your re-seller or the number listed above for warranty assistance.
- B. Provide dated proof of purchase and maintenance records.
- C. All generators must be delivered or shipped to the nearest Service Agent or re-seller. Freight costs, if any, must be borne by the purchaser.
- D. Use reasonable care in the operation and maintenance of the products as described in the owner's manual(s).
- E. No warranty costs incurred will be considered for, or covered if Euroquip has not been contacted and prior permission for repair / replacement has been granted.

8. **WHEN WARRANTOR WILL PERFORM REPAIR OR REPLACEMENT UNDER THIS WARRANTY:**

Repair or replacement will be scheduled and serviced according to the normal work flow at the servicing location and depending on the availability of replacement parts.



Congratulations on your new Remington product. We are proud to have you as our customer and will strive to provide you with the best service and reliability in the industry. This product is backed by our extensive warranty and world-wide service network. Please contact your local agent or submit a service case online for fast response at www.remingtonpower.co.nz and find the form under the service tab.